

AJ

06.10.05
CARUSO ST JOHN/
COVER VERSIONS

ISSN 0003-8466

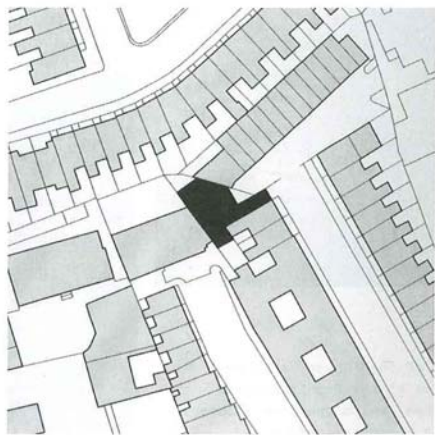


9 770003 846103

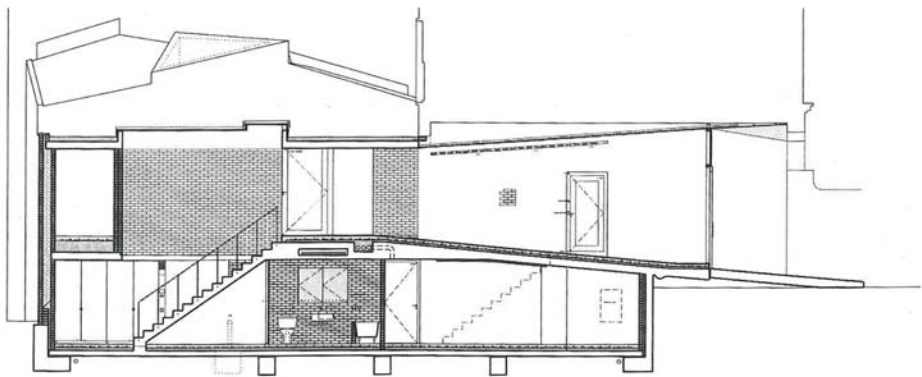
£3.25

BRICK HOUSE

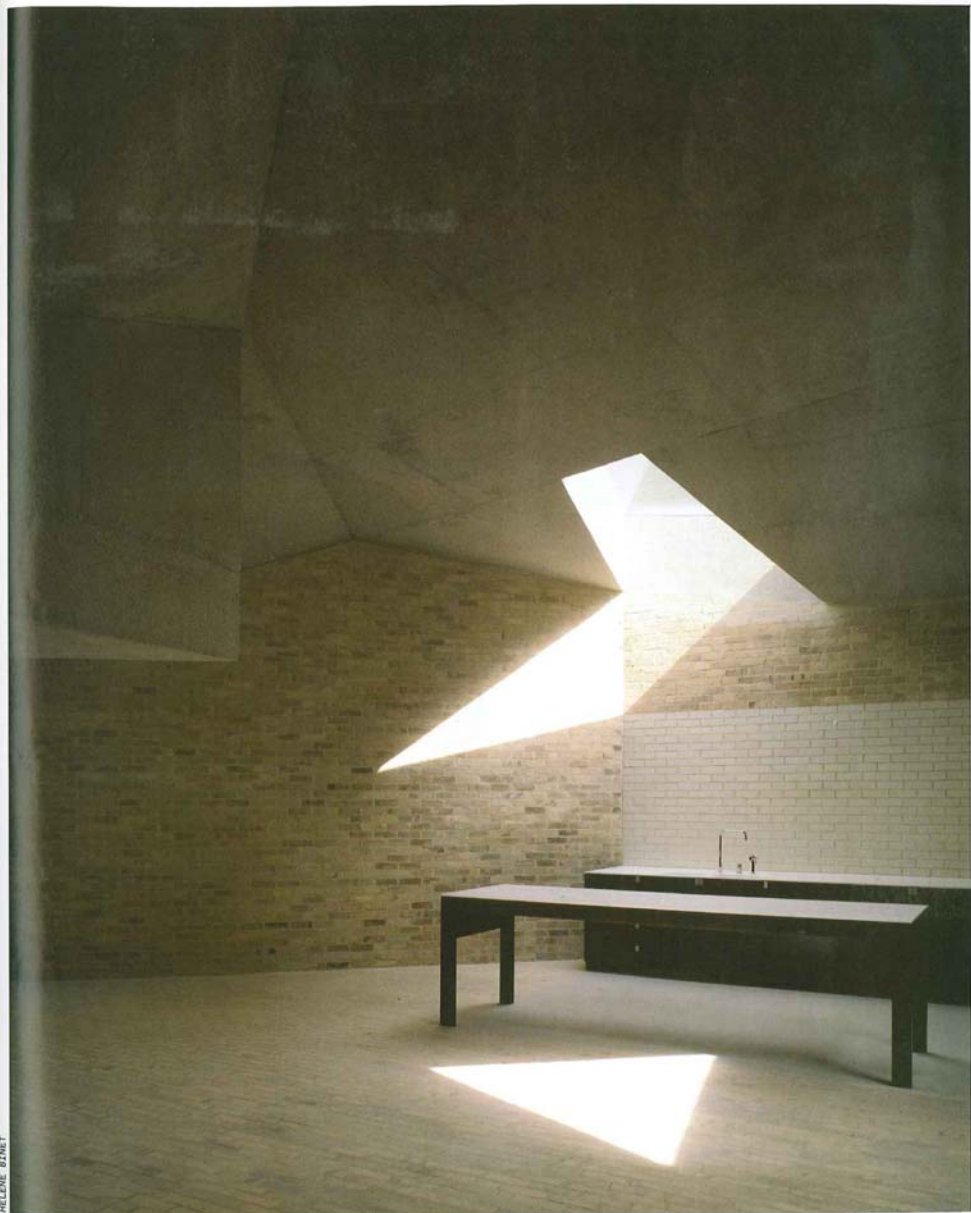
'In this design, the accidental but wildly spatial shape of the site has been used to form the living spaces. The interior plan is completely separate from the typologies of the London town house or inner-city loft, while still retaining a strong sense of dwelling at the heart of the city. The exterior form of the house is incomprehensible from within. Instead, the form appears unbound and soft, as if an internal force is pressing the walls and roof out against the buildings around it. The floors and walls of the house are built of brick, inside and out. The use of one material binds the whole building into an enveloping body, emphasising a skin-like character over any tectonic expression. The arrangement of the bricks within the mortar shifts as surfaces stretch, bend and twist, making them appear elastic. The ceiling of the upper floor is cast concrete and adopts different levels to make particular spaces within the overall deep plan. A flat ceiling appears to press down over the dining table, and a domed profile forms the high ceiling over the main living space.'
Canuso St John



5. Site plan



6. Section



HELENE BTHET

10.